



VENUE & EVENT INFORMATION

THE GARAGE MAIN HALL VENUE

Address:

490 Sauchiehall Street, Glasgow, G2 3LW

Telephone:

Venue 0141 332 1120
Head Office 0141 572 1120

Venue Managers:

Sean McGettigan sean@cplweb.com
Tracy Mcshane Tmcshane@cplweb.com

PRICES –MAIN HALL

The standard rental price for the venue is **£1,100 plus VAT**. Payable to the Venue Management on the night. This includes use of PA as specified below, in house lighting, venue security and bar staff. A member of staff to operate the cash desk is also available if required.

The following discounting structure applies dependant on the number of patrons over the age of 18 attending the event. This will be decided by Venue Management based on the quantity of over 18 wristbands distributed on the door.

Number of patrons over 18 years of age	Hall Hire Charge Net of VAT
300	£1,050
400	£1,000
500	£950
600	£900
700	£850

Performing Rights Society (PRS)

All hire fees are subject to the addition of PRS (3% of ticket sales) which must be paid to Venue Management when you pay your hall hire. You are also required to supply us with a completed Performing Rights Society Programme Return.

MERCHANDISE:

A charge of 10 pence per person attending the gig will be levied on the night for all merchandise sold in the venue. This is payable to the Venue Management at the end of the event.

CREW:

Preferred in-house crew: M.A.D. crew, please call John McFarlane on 07949 635 375 to arrange crew for your event.

IN HOUSE LIGHTING TECH:

In-house lighting tech will be available from load in. He will either set up lights and assist with show, or can run the lights for your show on his own, if required. The charge for this is **£75.00** payable on the night to the Lighting Tech who will provide you with an invoice.

TECHNICAL INFO: GARAGE - MAIN HALL

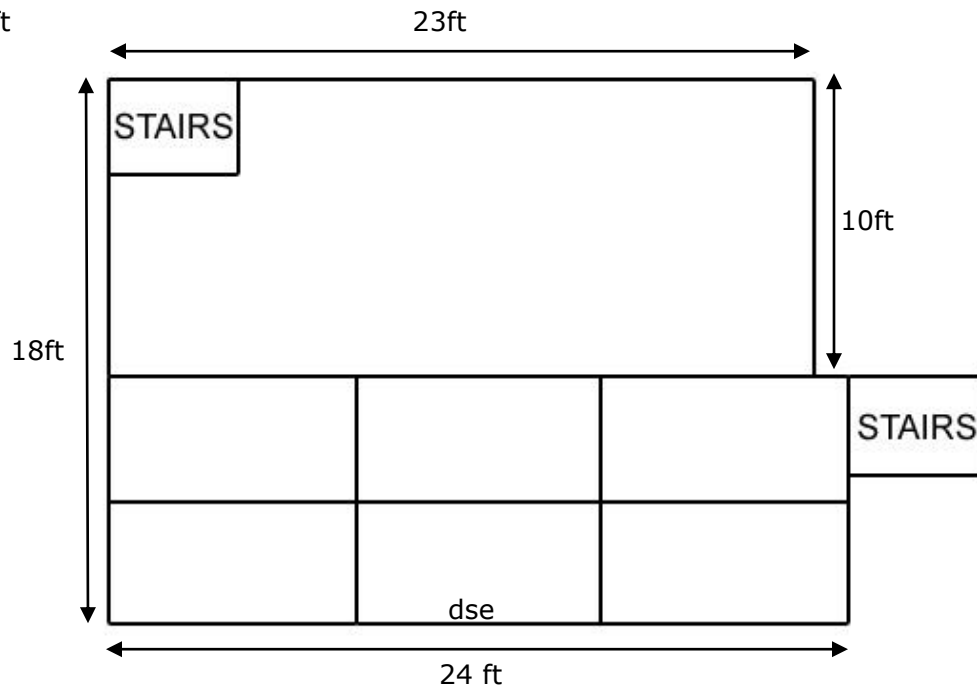
Capacity 700 People

Load In

From Renfrew street at the rear of the venue ([Google maps link](#)) down the car park slope straight into main room at stage right.

Main Hall Stage

Height: 2.9ft



TECHNICAL INFO: GARAGE - MAIN HALL (cont.)

Clearance: is 12ft (approx) above stage.

Flying Points:

There are **NO** usable flying points in the venue for touring equipment.

Backdrops:

Flown from the back of the lighting truss.

Please note that valid fire certificates are required before a backdrop is put up



VENUE & EVENT INFORMATION

Power:

Sound: 63Amp Single Phase (Cee form)

Lights: 63Amp Three Phase (Cee form)

FOH position:

SOUND: Centre location at the rear of the hall in the drop balcony. Access is up a set of stairs.

LIGHTS: Situated on the right of the sound desk.

House spots:

No.

Stage Barrier:

We have a free standing Aluminium MOJO type barrier.

PA SPEC:

In-house PA boxes and amps (used as the base of all systems and our main club rig.)

Please note that this is a hard install and does not come out.

12 x Ethos VA array (6 a side)

6 x Ethos 315 Bass (3 a side flown)

4 x Ethos 218 Subs (2 a side under the stage)

8 x LS45 Power Amplifiers

The following control equipment is included in your hall hire and is brought in for each event by EFX Audio, our preferred sound company.

Front of House Control

1 x Midas Verona, 48ch console

1 x XTA GQ600, 31-band Eq

1 x XTA DP226, processor

1 x CD player 01 ASL Comms

Insert & Effects

1 x Roland sde3000, tap delay

2 x Yamaha SPX990

1 x Lexicon pcm70/80/90

6 x Drawmer 201 gates

8 x DBX160a compressors

Monitors

1 x Midas Siena, 48ch console

8 x Klark Teknik, DN370 31-band Eq's

12 x Logic Systems CM20 wedges

1 x Logic Systems 118 drums sub

2 x Lab gruppen/Xta428, 4-mix racks

Additional Items

1 x 85M, 48 pair VDM multicore

1 x 32A/415V, 3Ø mains distribution

Mics & stands

Should you require alternative arrangements please contact Mark Boyle our Technical Manager who's details are at the top of this document.



VENUE & EVENT INFORMATION

Lighting: in-house only.
1 x Fat Frog lighting desk

Stage truss: 30 x LED parcans
4 x 4 cell blinders
2 x Pulsar Demon Strobe

Front Truss: 10 x parcans

PRODUCTION OFFICE:

A production office is available for exclusive use of the promoter throughout the day. There are plenty of power points available as well as WiFi and Ethernet sockets for internet access and a phone. A photocopier is located in another room but promoters are welcome to use this facility.

Additional Info: You will find a copy of phone numbers for anything from backline services to local music stores on the production office wall, along with menu's and details of all the local restaurants and take-away food places.

DRESSING ROOMS:

Dressing Rooms are situated in the basement level of the venue. The gate leading to the dressing rooms is covered by backstage security all night. Additional security can be arranged in advance.

1 X Large, 1 X Small. More rooms can be made available if requested. This must be arranged in advance with the venue managers.

1 X Shower located in both Band Rooms.

Please note that any damages caused to the dressing rooms will be charged to the promoter once a full assessment of damage has been taken.

Wi-Fi network available in dressing rooms and production office. Ethernet also available in production office.

Towels:

Are available via the venue:	Bath Towel	£1.00	£5.00 Replacement Cost
	Hand Towel	£0.50	£3.00 Replacement Cost

RIDERS AND CATERING:

We can supply you with alcohol, soft drinks and water for any riders at a very competitive price. Please speak to Venue Management if you would like us to arrange any of this for you.

Unfortunately we are unable to accommodate any outside catering.

There are a number of restaurants, takeaways, sandwich/ coffee shops in the local area as well as a Tesco Metro store next door. We have a folder with all the carry out menus, please ask the venue manager for this on arrival (if not already in production office).

PARKING:



VENUE & EVENT INFORMATION

There is parking available at the back of the venue on Renfrew Street which can accommodate tour buses, see Google maps for the exact location [Google map link](#)

There is landline power available for one bus. (16 Amp Cee Form Single Phase). The landline power is not available overnight.

SHOW TIMES:

Doors **7.00pm**
(Earlier opening possible with prior arrangement)

CURFEW
Sunday- Friday **10.30pm**
Saturday **10.00pm**
(Venue is a club 7 nights a week, your co-operation in observing this curfew is appreciated)

SECURITY:

In-house SIA badged security, no other personnel are permitted to deal with the public inside the venue. Please direct any requests regarding security via either the Venue Manager or the Security Manager.

Additional security for vehicles, early starts, extra pit etc...is available at a cost and must be arranged with Venue Management in advance.

We have a strict no glass policy inside the venue. All bottled drinks will be decanted into plastic glasses and any pints and spirits will also be served in plastic glasses.

Crowd Surfing is discouraged, repeat offenders will be ejected but only as a last resort.

Our policy is to encourage a lively enjoyable atmosphere but with adequate arrangements to prevent major issues developing and provide fast effective response to unsafe crowd situations.

Venue management decisions are final.

AUDIENCE PROFILE:

Stewards are briefed prior to doors as to the audience profile and their likely behaviour. Artist and promoter input in this process is welcomed.

SEARCHES:

Full searches are mandatory for entry to the Garage. Professional cameras will be stored until the end of the show. Harmful items and food/drink will not be permitted inside the venue.

UNDER 16's:

If the promoter has made arrangements with the venue manager for a +14 show then any U16's must be accompanied by an adult. This must be stated on all tickets and advertising.

BOX OFFICE:



VENUE & EVENT INFORMATION

At present we do not have box office facilities for the sale of tickets. We can however sell online via www.ticketweb.co.uk. We are looking into the possibility of running a box office from the venue and will inform you of any changes as and when we can.

On the night of your event our cash desk is available for your staff to sell tickets or run the guest list from.

AFTERSHOW FACILITIES:

Facilities are available however any aftershow must be arranged in advance with venue. If the bands would like to stay in for the club night they are more than welcome and we will ensure adequate security is available.

Arrangements can also be made at the Cathouse and Tunnel clubs if required.

www.cathouse.co.uk

www.tunnelglasgow.co.uk

SHOW STOP:

Just before doors to the event, there will be a show stop meeting with venue manager, head of security, promoter's rep and band rep (tour manager). This meeting is in case there is an emergency that calls for the show to be stopped, that everyone involved knows the correct procedures as to carry this out quickly and safely.

CASH:

Please arrange in advance if you need to collect cash on the night otherwise we will assume that a cheque to follow will be fine.

ADVERTISING:

Please ensure that all tickets and advertising include one of the following phrases relevant to your event.

18+ GIG Strictly over 18's please bring ID, Management Reserve All Rights.

14+ GIG Under 16's must be accompanied by an adult, please bring ID, Management Reserve All Rights.

We are completely against flyposting and it is illegal in Glasgow. Should we discover that flyposting has taken place and the venue is threatened with a fine we will happily pass promoter details onto the council. There are a number of companies who de

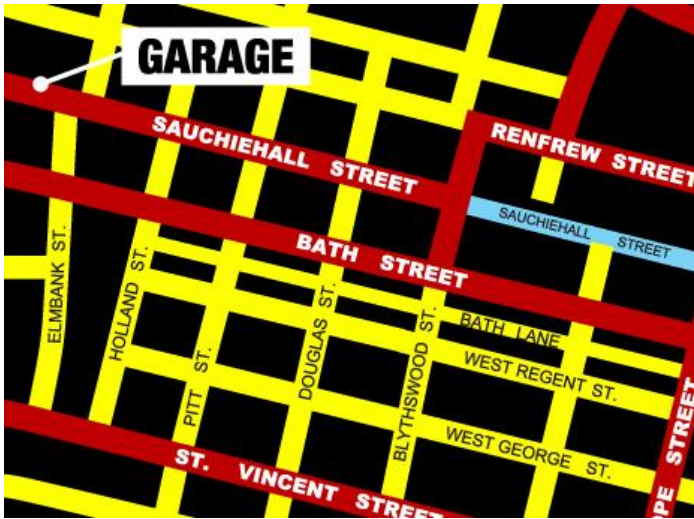
al with legal poster sites, should you require more information on this please ask.

LOCATION AND LOCAL FACILITIES:

The Garage is located at the Charing Cross end of Sauchiehall Street and is on the main bus route into the heart of the city. It is surrounded by bars, restaurants, coffee shops and convenience stores. Retail shops can be found just a short walk (5 mins) from the front door.

Nearest Underground Station: St Georges Cross

Nearest Rail Station: Charing Cross



HIRING

Please contact Senga Todd or Jen Fisher on 0141 572 1120 about hiring of venue.